

Installation Instructions for Quick-Lock BIG

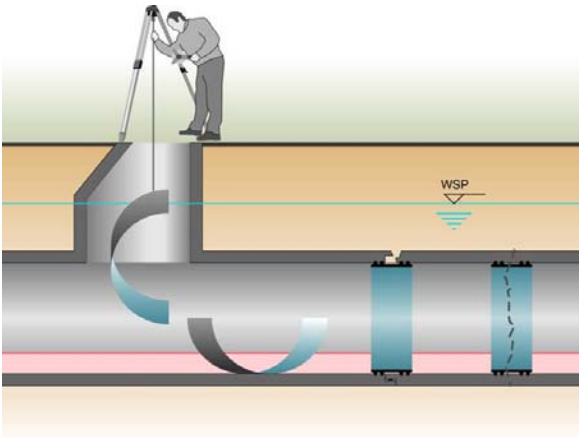
1. Clean pipe and remove all sediments at the location to be repaired (circular).
2. Joint offsets larger $\frac{1}{4}$ inches have to be flattened out or equalized. Sewer-resistant grouting can be used.
3. Insert Quick-Lock BIG sleeve through manhole.
4. Connect upper and lower sleeve halves and secure with knurled screws. Partially cut-in the Quick-Lock secure tape.
5. Pull the rubber gasket over sleeve.
6. Move the complete sleeve to the spot to be repaired and center sleeve over joint. Mark the pipe circumferentially 4 inches from the center of the joint and position the sleeve edge accordingly.
7. Expand sleeve by using the installation special tool so that it is slightly pressed against the pipe wall. Remove knurled screws.
8. Attach the Quick-Lock BIG special installation tool and expand sleeve by applying hydraulic pressure of 150bar (2400 psi). Using a rubber hammer, start knocking at the inner sleeve body on both sides, from 12 to 6 o'clock. Observe the pressure gauge: if you notice a pressure drop, re-apply initial pressure to 150 bar and repeat procedure until no pressure drop occurs anymore.

Technical Data:

Nominal Sizes available:	32 to 64 inches in diameter
Sleeve Width:	8 inches
Material:	V4A stainless steel, grade 1.4404
Rolled dia:	3.4 inches smaller than the respective nominal diameter
Tolerance coverage:	- 1 $\frac{1}{4}$ / + 1 $\frac{1}{4}$ inch on respective nominal dia



Remove sediments, equalizing offset with grouting



Insert sleeve through manhole



Positioning of sleeve



Attach special installation tool



Setting the sleeve against the pipe wall by using a rubber hammer



Finished installation